

A-BUS Compatible

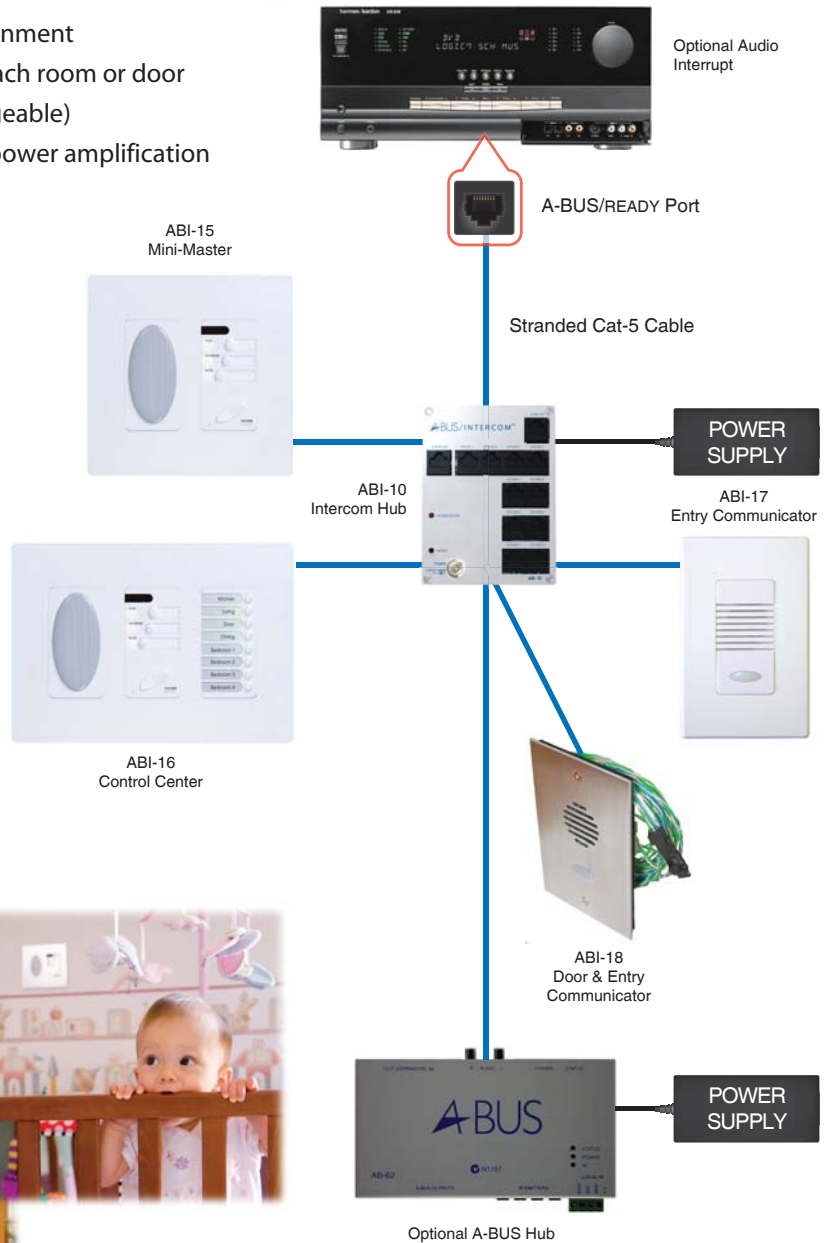
WHOLE HOUSE COMMUNICATIONS AT YOUR FINGERTIPS

Why Forté Intercom™?

- Designed to work in the structured wiring** environment
- Requires one stranded Cat-5 cable to connect to each room or door
- Your choice of room and entry units (all interchangeable)
- Great sound from wide-range speakers with high power amplification
- High-quality electret microphones with automatic gain-control can pick up voices anywhere in the room
- Supplied with illuminated faceplates (optional door unit as brushed aluminium or brass)
- Installed on its own or integrates automatically with Forté A-BUS* Multi-Room audio systems, without added equipment
- Includes powered door latch in entry unit for door/gate release

*Single-source interrupt ability.

**Structured wiring panels provide star wired cabling for data, TV, telephone, Forté A-BUS audio and Forté Intercom™ to an enclosure mounted in the garage or utilities area in the home.



a CAT-5 Solution

ABI-15 Mini-Master

Powerful and clear, its high-quality electret microphone can clearly pick up voices from near or far via automatic gain control. The TALK button calls all rooms initially but becomes one-to-one when responded to. Any room unit can select MUTE for privacy or MONITOR for monitoring (babies, etc.) For better entry door security, the TALK and MUTE buttons are pressed simultaneously to open the entry door (on ABI-18 only).

ABI-16 Control Center

Combining all the features of the ABI-15 Mini-Master with fingertip status control of all rooms, the ABI-16 Control Center easily selects direct one-to-one access for up to eight room units with hands-free operation for the receiver. Room menu shows status of activity, privacy or baby monitoring. Control Center can turn Privacy mode (Mute) and Monitoring in any other room on or off and remote monitoring access is one-to-one. Gentle red or orange LED flashes show when Privacy is engaged or not.

ABI-17 Door Communicator

Clean, clear communication is the benchmark of the ABI-17. It offers a choice of six selectable door chimes. Any answering room has one-to-one conversation with the door unit which has hands-free operation. Other room units may join in by pressing their TALK button. Other entry doors can be identified by separate chimes. Comes standard with a UV-resistant screwless faceplate and backlit call-button.

ABI-10 Hub

Fitting easily into a structured wiring panel, the ABI-10 Hub is the core of the Forté Intercom™ system. It accepts up to 8 Room units and 2 door stations via a star wire configuration on stranded Cat-5 cable. The ABI-10 hub includes loop-through to easily incorporate a single-source Forté A-BUS Multi-Room audio system with the Intercom. When an entry door is activated, the Forté Intercom™ hub automatically mutes the A-BUS Multi-Room audio. The A-BUS audio system automatically reactivates when the door is opened or it times out.

ABI-19 Door & Entry Communicator

More secure, the ABI-19 has extra features to suit the security and style of premium homes. The ABI-19 connects a powered, security-coded door latch connection (12/24V, 300mA) to the door latch via a cable with a mini-decoder board. The entry door can be opened only by the responding room unit/s. The door opening is timed so just one press is required. When there are two entry requests, the system will not open the second door until the first door has been opened or timed out. The ABI-19 comes with a contemporary brushed aluminum or brass front plate.

