

## WHEN RENOVATING OR BUILDING A NEW HOME

### When to use a structured-wiring Forté A-BUS hub:

- Building or renovating and installing a structured wiring panel\*\*
- Multi-zone with multiple source installations
- 4 zones or less (expansion hub is available for additional rooms)
- Hub is located in the structured wiring panel
- Source components are strategically located in each room or centrally located in a TV room or Home Theatre
- Infrared is required for remote control capability
- Integrating with an A-BUS/READY™, AV receiver

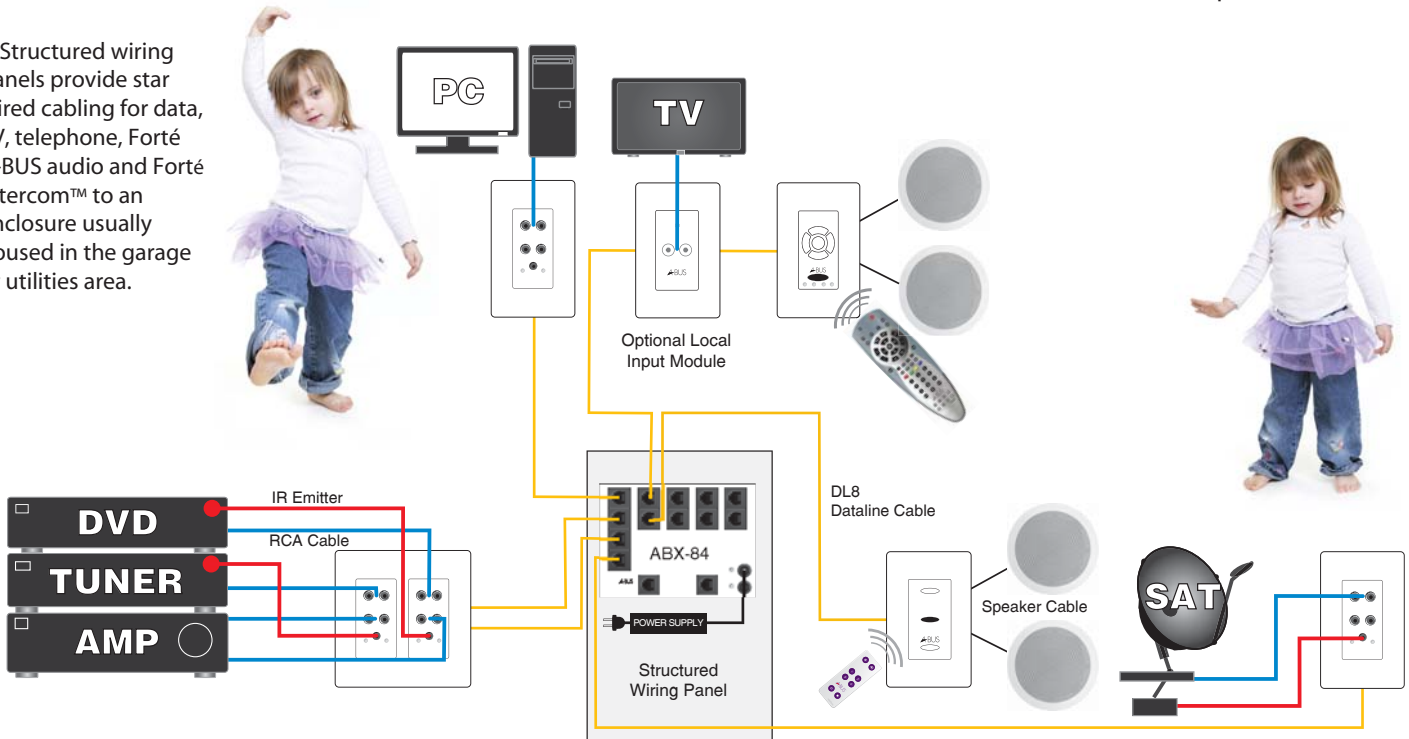
\*\*Structured wiring panels provide star wired cabling for data, TV, telephone, Forté A-BUS audio and Forté Intercom™ to an enclosure usually housed in the garage or utilities area.

### Why Forté A-BUS?



- Easy to install
- Plug & play, no programming is required
- A-BUS Dataline (DL8) cabling is low cost, and uses minimal speaker wiring from the keypad
- Amplified keypads are star wired to the hub and the power supply is centralized
- Keypads can fit into standard electrical wall boxes and come with screwless faceplates

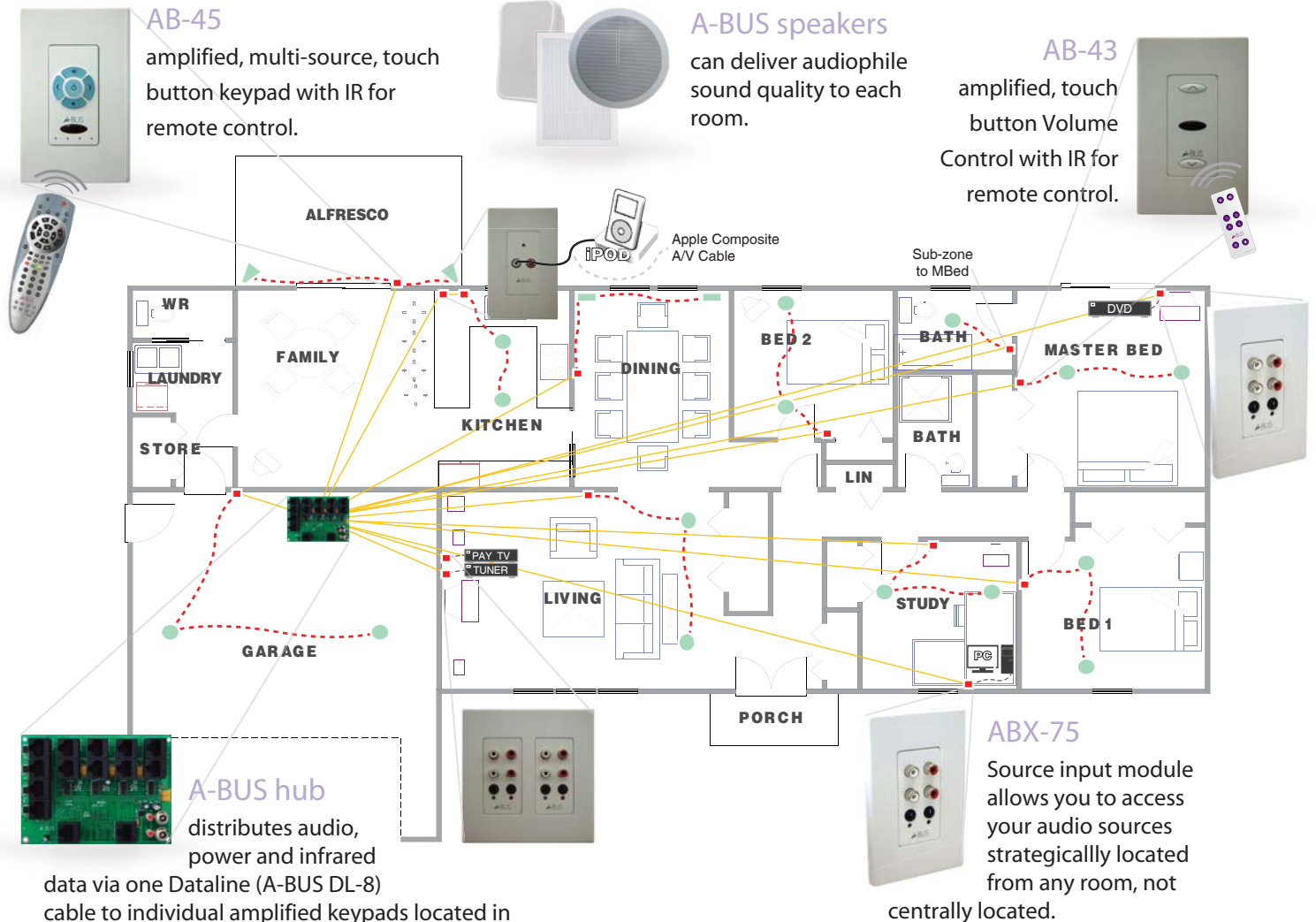
Keypads can fit into standard electrical wall boxes and come with screwless faceplates



# Structured-Wiring Hub Design

## WHEN RENOVATING OR BUILDING A NEW HOME

Your existing hifi system or A-BUS/READY™, AV Receiver is the starting point for Forté A-BUS. It can be as easy as one simple connection.



## WHEN ENHANCING AN EXISTING HOME

### When to use a surface-mount Forté A-BUS hub:

- Enhancing an existing home
- Single-source, multi-source or multi-zone system is desired
- 4 zones or less (expansion hub is available for additional rooms)
- Hub is located near TV or Home Theatre. Minimal to no heat, Forté A-BUS is ideal for use in a cabinet
- Source components are centrally located at the hub
- Forté Intercom™ is connected (single-source only)
- Integrating with an A-BUS/READY™, AV Receiver

### Why Forté A-BUS?



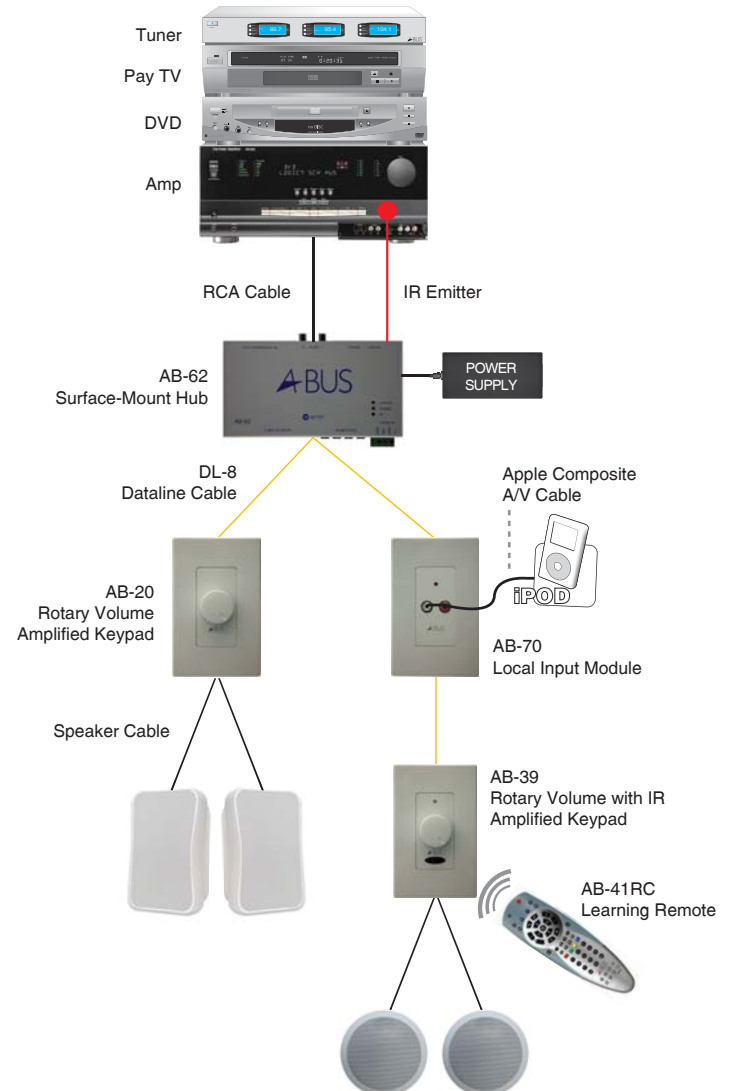
- Easy to install
- Plug & play, no programming is required
- A-BUS Dataline (DL8) cabling is low cost, and uses minimal speaker wiring from the keypad
- Amplified keypads are star wired to the hub

and the power supply is centralized

- Keypads can fit into standard electrical wall boxes and come with screwless faceplates

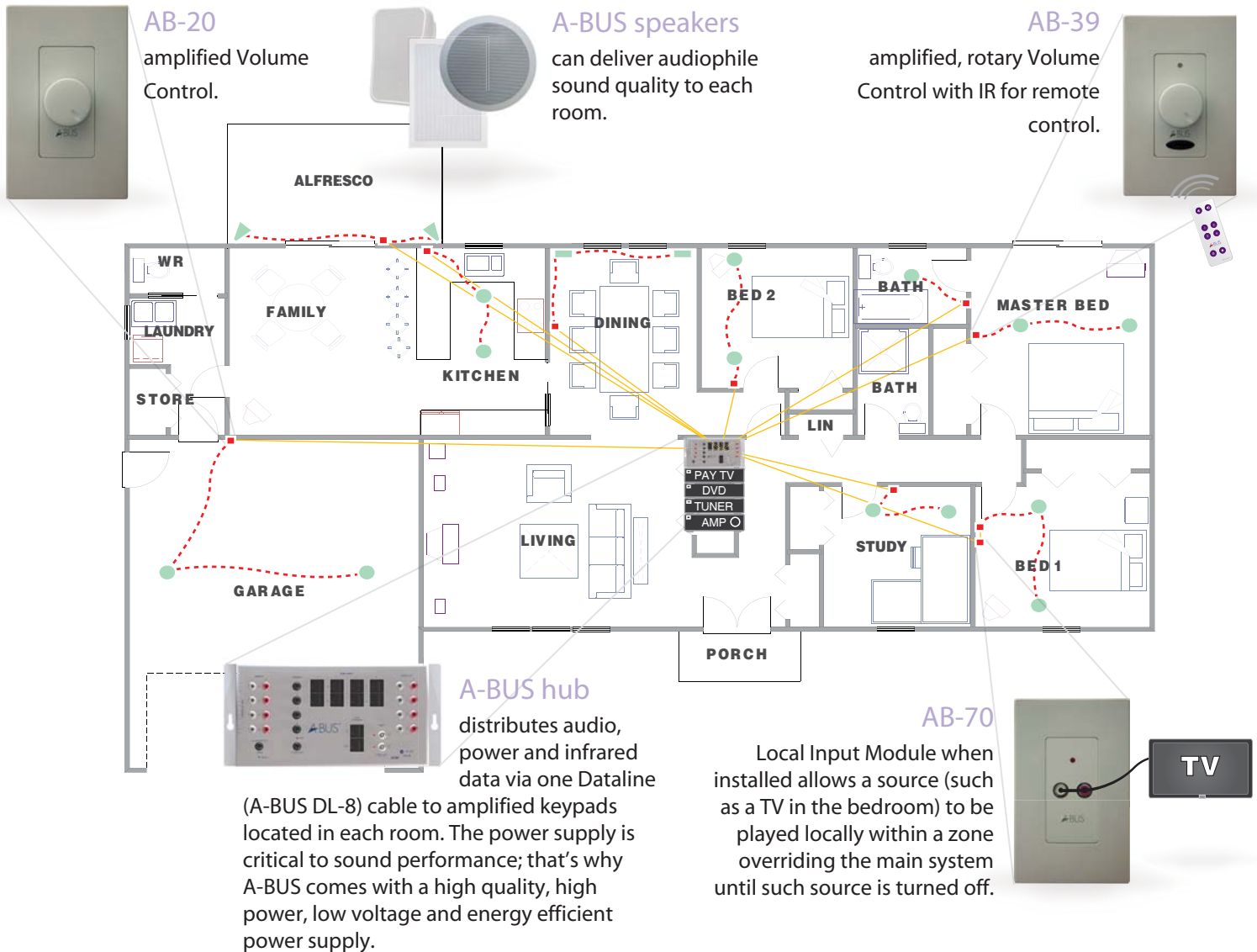
### With Your Existing HiFi.

Your existing hifi system or A-BUS/READY™, AV Receiver is the starting point for A-BUS. It can be as easy as one simple connection.



# WHEN ENHANCING AN EXISTING HOME

Your existing hifi system or A-BUS/READY™, AV Receiver is the starting point for Forté A-BUS. It can be as easy as one simple connection.



## IN-WALL KEYPAD NOT REQUIRED

### Takes the A-BUS philosophy one step further

- Places the amplification directly on one of the speakers
- This direct connection of the amplifier to the speaker
- improves speaker damping, giving tighter cleaner bass response
- Eliminates long runs of speaker cable ensuring the delivery of a high quality audio signal is optimised
- It is an ideal product for the home decorators who are looking for an invisible solution for their multi-room audio entertainment
- Can be used with any A-BUS/READY™, Forté A-BUS/STRUCTURED™ or Forté A-BUS surface-mount hub - single or multi-source



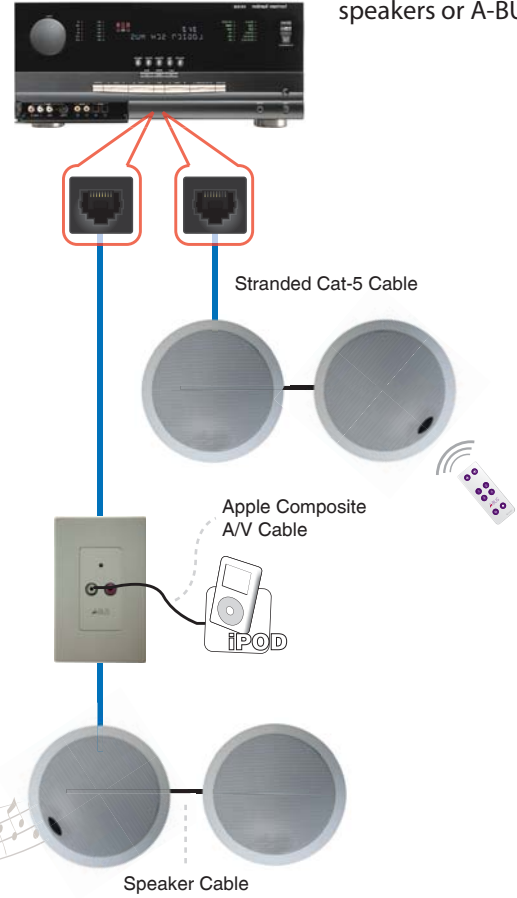
### Why Forté A-BUS/DIRECT™?

A-BUS/DIRECT™ has the simplicity of Forté A-BUS multi-room audio without the necessity for an in-wall amplified keypad. Only one stranded Cat-5 cable is required from the hub to the master speaker which has an infrared receiver installed behind the lens in the grille to pick up commands from your remote.



### A-BUS/READY™

AV receiver or multi-zone controller from leading audio manufacturers which includes an A-BUS socket for direct connection to A-BUS/DIRECT™ speakers or A-BUS hub.



### Forté A-BUS/DIRECT ABD-C6

A unique feature of the ABD-C6 is a mono/stereo switch. This enables the ABD-C6 to be used as a single speaker in bathrooms, laundries and hallways where an area is long and narrow, and places where stereo reproduction is not required.



# A-BUS Compatible

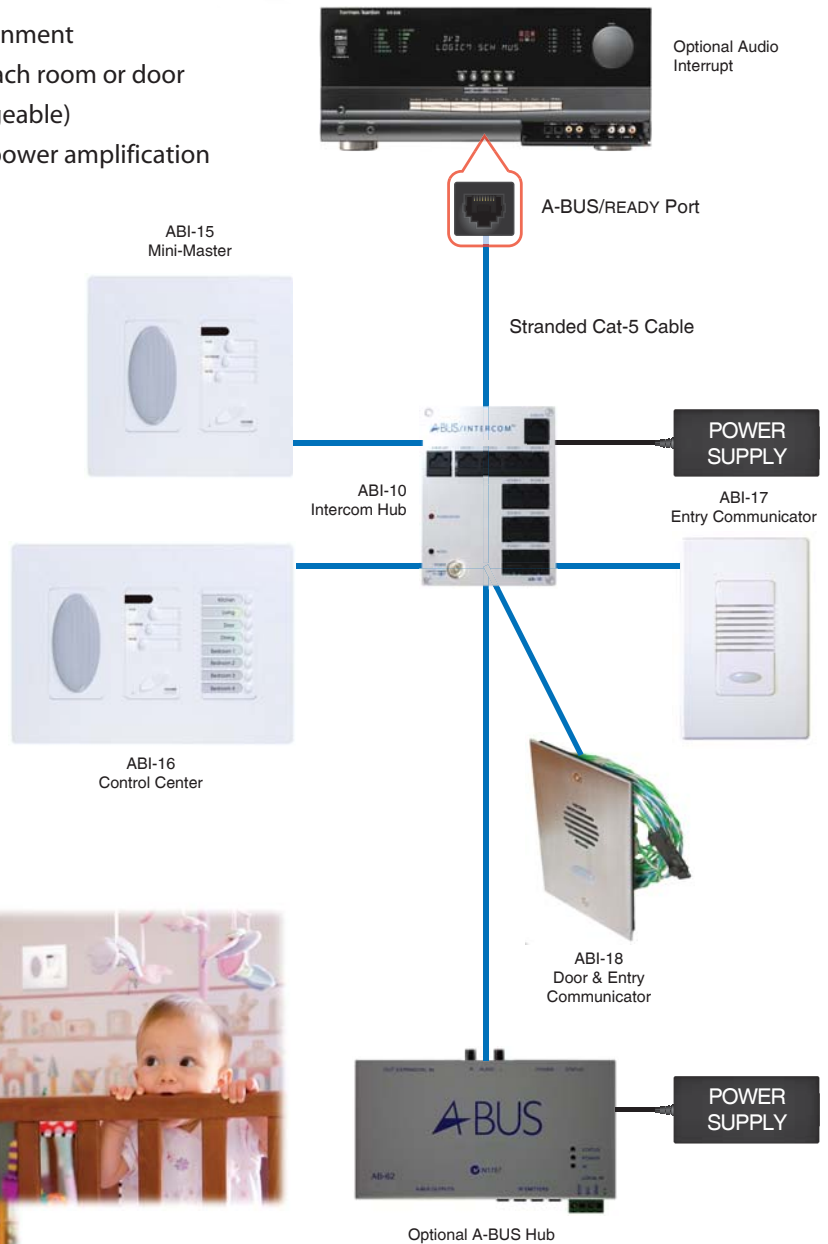
## WHOLE HOUSE COMMUNICATIONS AT YOUR FINGERTIPS

### Why Forté Intercom™?

- Designed to work in the structured wiring\*\* environment
- Requires one stranded Cat-5 cable to connect to each room or door
- Your choice of room and entry units (all interchangeable)
- Great sound from wide-range speakers with high power amplification
- High-quality electret microphones with automatic gain-control can pick up voices anywhere in the room
- Supplied with illuminated faceplates (optional door unit as brushed aluminium or brass)
- Installed on its own or integrates automatically with Forté A-BUS\* Multi-Room audio systems, without added equipment
- Includes powered door latch in entry unit for door/gate release

\*Single-source interrupt ability.

\*\*Structured wiring panels provide star wired cabling for data, TV, telephone, Forté A-BUS audio and Forté Intercom™ to an enclosure mounted in the garage or utilities area in the home.



# a CAT-5 Solution

## ABI-15 Mini-Master

Powerful and clear, its high-quality electret microphone can clearly pick up voices from near or far via automatic gain control. The TALK button calls all rooms initially but becomes one-to-one when responded to. Any room unit can select MUTE for privacy or MONITOR for monitoring (babies, etc.) For better entry door security, the TALK and MUTE buttons are pressed simultaneously to open the entry door (on ABI-18 only).

## ABI-16 Control Center

Combining all the features of the ABI-15 Mini-Master with fingertip status control of all rooms, the ABI-16 Control Center easily selects direct one-to-one access for up to eight room units with hands-free operation for the receiver. Room menu shows status of activity, privacy or baby monitoring. Control Center can turn Privacy mode (Mute) and Monitoring in any other room on or off and remote monitoring access is one-to-one. Gentle red or orange LED flashes show when Privacy is engaged or not.

## ABI-17 Door Communicator

Clean, clear communication is the benchmark of the ABI-17. It offers a choice of six selectable door chimes. Any answering room has one-to-one conversation with the door unit which has hands-free operation. Other room units may join in by pressing their TALK button. Other entry doors can be identified by separate chimes. Comes standard with a UV-resistant screwless faceplate and backlit call-button.

## ABI-10 Hub

Fitting easily into a structured wiring panel, the ABI-10 Hub is the core of the Forté Intercom™ system. It accepts up to 8 Room units and 2 door stations via a star wire configuration on stranded Cat-5 cable. The ABI-10 hub includes loop-through to easily incorporate a single-source Forté A-BUS Multi-Room audio system with the Intercom. When an entry door is activated, the Forté Intercom™ hub automatically mutes the A-BUS Multi-Room audio. The A-BUS audio system automatically reactivates when the door is opened or it times out.

## ABI-19 Door & Entry Communicator

More secure, the ABI-19 has extra features to suit the security and style of premium homes. The ABI-19 connects a powered, security-coded door latch connection (12/24V, 300mA) to the door latch via a cable with a mini-decoder board. The entry door can be opened only by the responding room unit/s. The door opening is timed so just one press is required. When there are two entry requests, the system will not open the second door until the first door has been opened or timed out. The ABI-19 comes with a contemporary brushed aluminum or brass front plate.



## RECOMMENDED WITH FORTÉ A-BUS MULTI-ROOM AUDIO

### Soundcast® AudioCast™

Lets you turn your PC into a music centre. Simply hook the AudioCast transmitter to the line out jack on your computer and send your recorded music files to the AudioCast receiver that is attached to your A-BUS music system, wherever it may be in your home.



- Range up to 100m
- PC & other sources via AUX 3.5mm jack
- 3-channel selectable frequency switch
- Headphone socket doubles as the input jack

### Soundcast® iCast™



The Soundcast iCast system is tailored to the needs of the Apple iPod® owner. It frees your iPod from a direct connection to your A-BUS amplified keypad or hub. Locate the iCast transmitter anywhere in your home and still

operate your iPod – wirelessly.

The iCast transmitter is specially configured to accommodate most of the currently available iPods, using approved interchangeable inserts in the docking bay.

The iCast transmitter will also charge your iPod, and you can still use all the iPod controls to operate the iPod while it is in the dock transmitting your music to the iCast receiver, located elsewhere in your home.

- Range up to 100m
- Dock supports iPod Classic, Nano, iPod touch, iPhone and other sound sources via AUX 3.5 mm jack
- Headphone socket doubles as the input jack
- The iCast receiver duplicates several key iPod functions to allow you to operate your iPod remotely from the receiver location.

### Russound® ST2 Dual Stream Tuner

Great for a centrally located source component.

Enjoy listening to your favourite radio station in two different zones. With the ST2 Smart Tuner, it's like having two radios in one.



You get two broadcasts at the same time from one compact single-unit chassis. It's twice the fun.

### Channel Vision™ AB-311

In-wall docking stations for A-BUS music systems.



- Holds and charges all iPods (excluding shuffle)
- Senses audio to automatically override the main A-BUS source
- Is a local source module
- Fits any prewired A-BUS installation
- Fits in single-gang box

No need to stop playing your iPod just because you have arrived home. With both the indoor and outdoor version of the in-wall dock, continue your favourite music in your room.

It acts as a local source and is recommended in areas such as Kitchens and Bedrooms providing an attractive way to listen while charging your iPod.

The outdoor model has a weather resistant, UV protective cover making this docking station ideal for use on patios and pool decks.